

SPECIFICATIONS

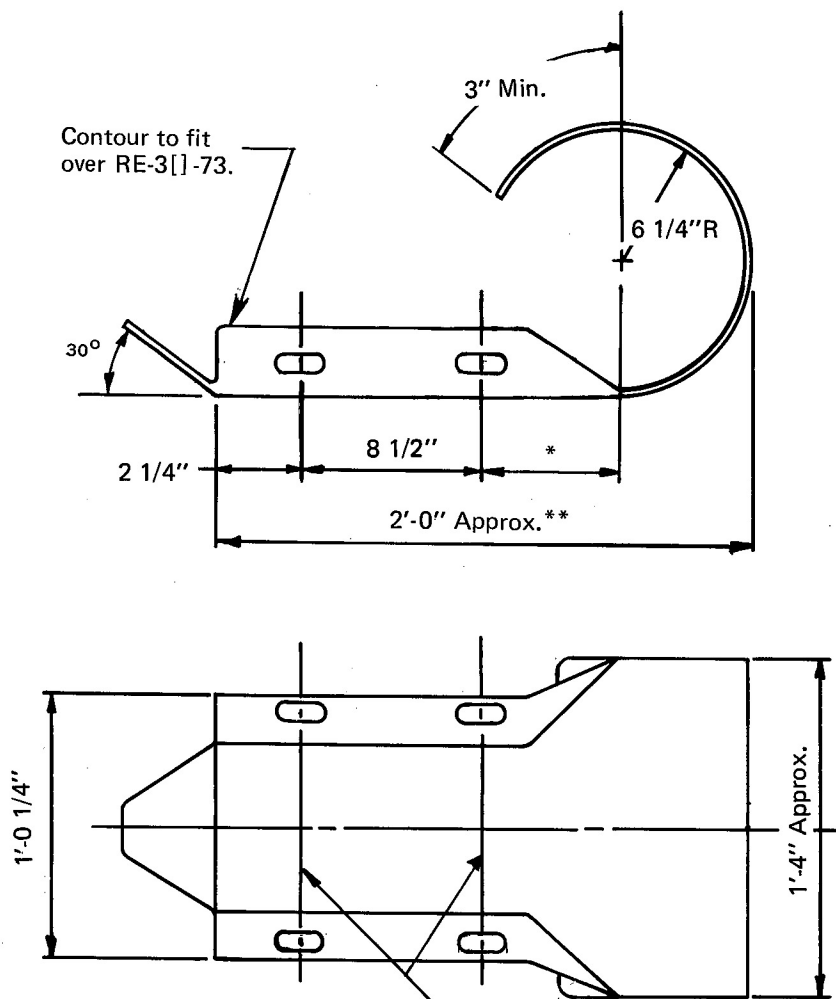
Curved end terminal sections shall conform to the current requirements of A.A.S.H.T.O. M180, Class A, Type 2.*

Dimensional tolerances not shown or implied are intended to be those consistent with the proper functioning of the part, including its appearance, and accepted manufacturing practices.

INTENDED USE

This end section is used in some of the rail element terminal configurations employed with the standard "W" Beam guardrail designs G4.

* If another class or type is required this should be indicated by a modified part number. For example, if corrosion resistant steel is required show thusly:
RE - 6[Class A, Type 4] - 79.



* This dimension is 7-1/2" in RE-7-79. If the same dimension is used in this part, it will give an acceptable overall length (**) of approximately 2'-1-1/2".

Splice bolt slot
29/32" X 1 1/8"

W BEAM END SECTION (ROUNDED)

HM-TF-13

STANDARD

RE - 6 - 79